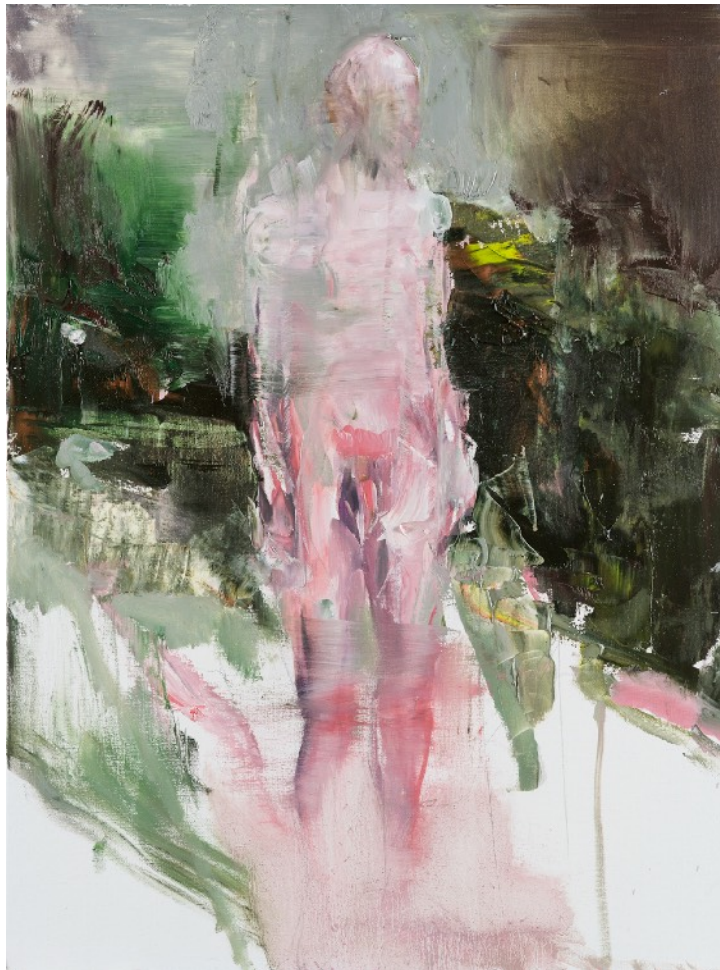


EDWIGE FOUVRY

Painting workshop I

Madrid, May 11-12th 2020

MODEL AND EXPRESSION



Atelier Villeneuve
Calle Salaberry, 89, 28019 Madrid
10 am – 18 pm

INSCRIPTION

www.theartdiggerlab.com

THE ART DIGGER LAB ©
SHARING GOOD ART & KNOWLEDGE

Edwige Fouvry

Madrid, May 11-12th 2020

MODEL AND EXPRESSION



Edwige Fouvry was born in Nantes, France, in 1970, and currently lives and works in Brussels, Belgium. She received her master's degree from the École Nationale Supérieure des Arts Visuels de la Cambre, Brussels, in 1996. She has exhibited widely across Europe and North America and participated in the 2011 group exhibition HEADS, curated by Peter Selz, at the Dolby Chadwick Gallery. Her work has been reviewed in the San Francisco Chronicle, Art Ltd., and Artension. This will be her fourth solo exhibition at the gallery (Dolby Chadwick Gallery).

Although clearly embedded in a visual awareness of the physical world, Edwige Fouvry's paintings are never made directly from life. Instead, they are complex syntheses wrought by her imagination. By knitting together childhood recollections, photographs old and new, the moving world seen from the windows of trains, stills harvested from the television set and other media, Fouvry pursues an "emotional truth" in which the recorded, the remembered, and the imagined must each play a role.

The evolution of Fouvry's style since her days at Belgium's prestigious La Cambre school has been, in a very important sense, a process of simplification. While she has added extensively to her repertoire over the years, she has at the same time gradually stripped from her work any affect that emphasizes concept over the viewer's personal encounter with the work. Even the complexity of external narrative has been plucked away, leaving in its place the self-sufficiency, the immediacy, and the generous elasticity of poetry. Her art is a door through which she invites us to visit a deeply personal, deeply subjective, space, to have an experience that is far more sensual than notional, far more emotional than theoretical.

Tadzio Koelb

Edwige Fouwry

Madrid, May 11-12th 2020

MODEL AND EXPRESSION

LEARNING OBJECTIVES

First, I will explain the evolution of the representation of the body through art history.

Then we will observe how the model is figured by different artists and which are the feelings that are communicated to us.

After this explanation, we will first draw , moving from place to place all around the model to understand the volumes and the proportions.

I will also make a demonstration of how to find the right construction main lines and volumes.

Then , we will work on the palette to create the skin colors but also to extend this palette to unusual colors to create feelings, intensity and to re-enforce de contrasts...

I will encourage you, and help you in pushing the academic limits , play with colors, shapes, composition, thickness and light layers of paint, to add new tools to your own artistic vocabulary.

RECOMMENDED MATERIALS

- Palette: Titanium white, Naples yellow green, lemon yellow, cadmium yellow medium, Cerulean blue, ultramarine blue, Alizarin red, Vermillion red, Venise earth, raw umber, flesh tint, violet, ivory black.
- Palette knives and your favorite brushes from all sizes and a medium fan brush
- Medium: Linseed oil, odourless turpentine, liquin
- Support: paper for oil painting, 30x40cm and one or 2 canvas 50x60 cm
- Rags, drawing material (block of paper and pencils)

The organisation will provide easels to the participating artists.

EDWIGE FOUVRY

Painting workshop I

Madrid, May 11-12th 2020

MODEL AND EXPRESSION

INSCRIPTION

Price: 345 €

Applicant artists can register online at:

www.theartdiggerlab.com

To get more information:

email admin@theartdiggerlab.com or Phone +34 609 039 725